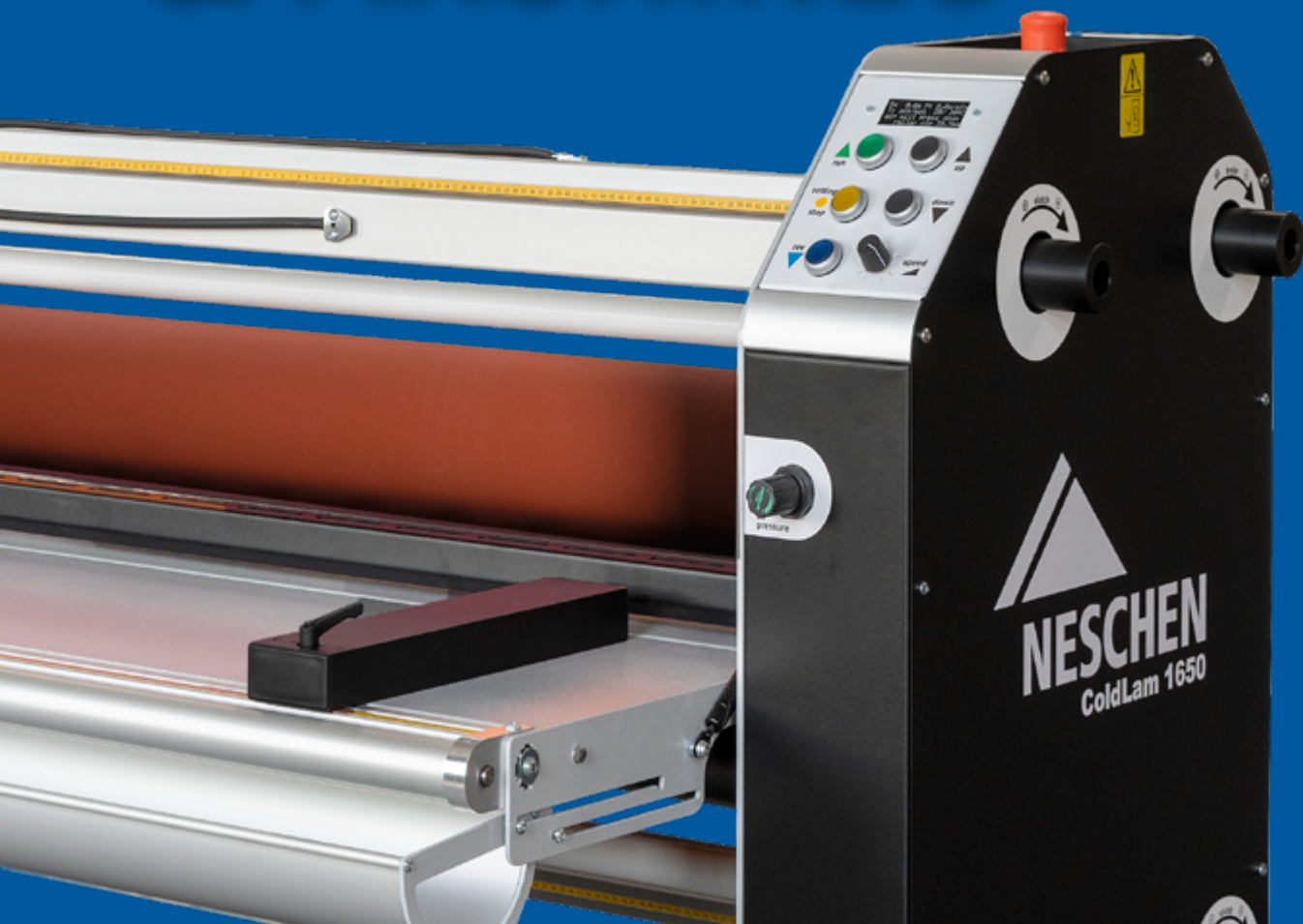


PRODUCT CATALOG

NESCHEN LAMINATORS & MACHINES



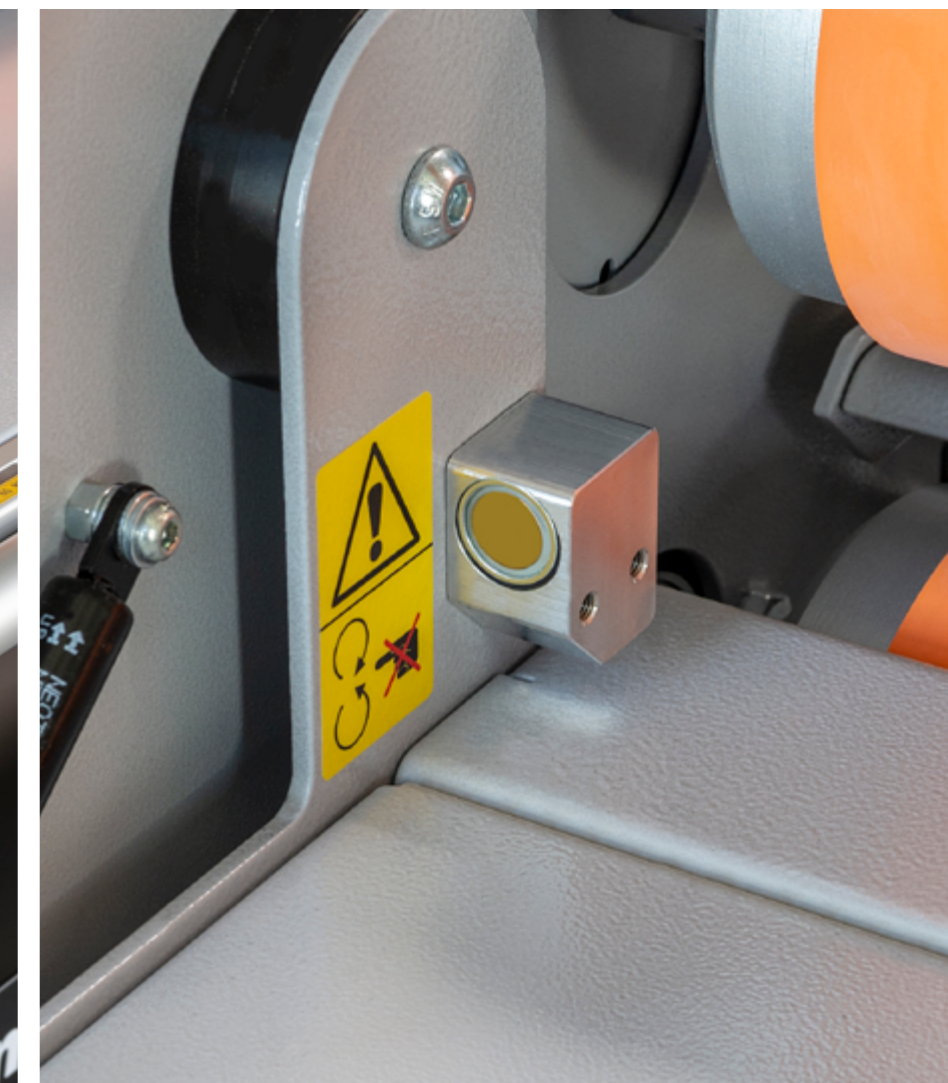
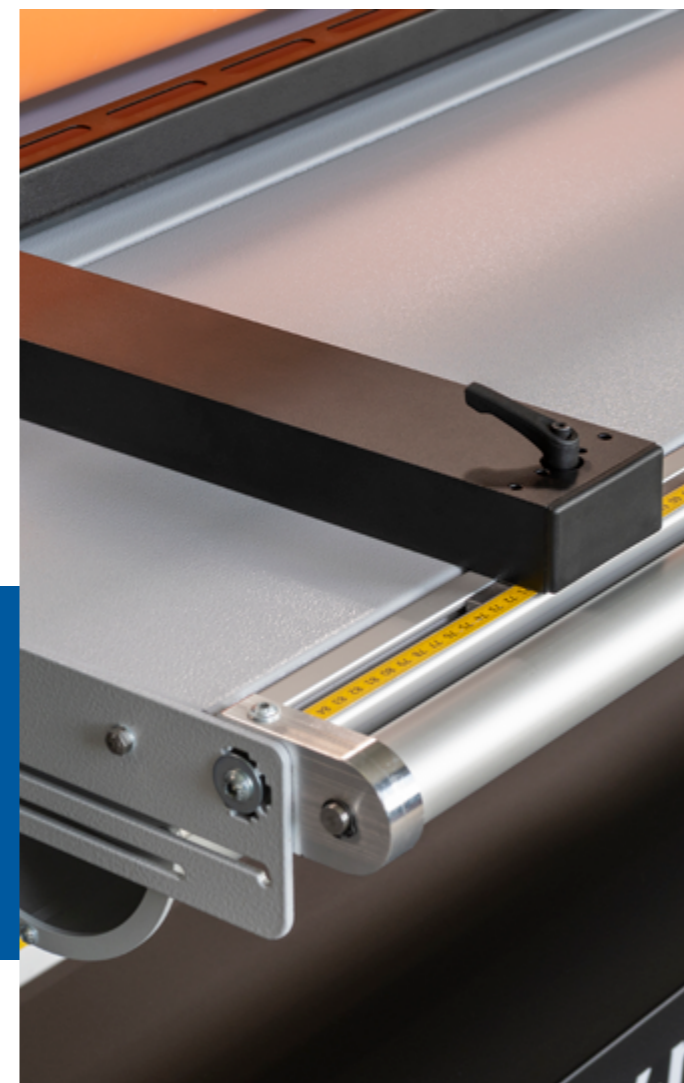
 NESCHEN
135 YEARS

WWW.NESCHEN.COM

NESCHEN LAMINATORS

CONTENT

PRODUCT SELECTOR	4
NESCHEN ECOLAM 1650	5
NESCHEN COLDLAM 1650	6
NESCHEN COLDLAM 1650 SW	7
NESCHEN HOTLAM 1650 TH	8
NESCHEN HOTLAM 1650 DOUBLEH	9
NESCHEN PHOTOLAM 650	10
NESCHEN ROLLCUTTER 1650	11
ACCESSORIES	12 - 13



DID YOU KNOW?

YOU WILL FIND THE LATEST MANUALS
FOR YOUR NESCHEN LAMINATOR AND
MACHINE IN OUR DATABASE:
SCAN THE QR CODE OR GO TO

WWW.NESCHEN.COM/MANUALS

NEW

ALL THAT ADVERTISING-TECHNICIANS AND PHOTOGRAPHERS WANT



Neschen laminators have been the synonym for professional, flexible and reliable laminating machines since the 1970s. The current Neschen range offers everything service providers or photographers could wish for, from price-conscious entry-level devices to high-end multifunctional laminators. Hot and cold lamination, user-friendly operation, high working speed and a wide range of applications characterize Neschen laminators. Exceptional quality at an unbeatable price-performance ratio. When designing the laminators, we placed great emphasis on the fact that a large part of the maintenance can be carried out by the users themselves – this saves time and money.

WHICH LAMINATOR IS THE BEST ONE FOR YOU?	NESCHEN ECOLAM 1650	NESCHEN COLDLAM 1650	NESCHEN COLDLAM 1650 SW	NESCHEN HOTLAM 1650 TH	NESCHEN HOTLAM 1650 DOUBLEH	NESCHEN PHOTOLAM 650
Max. work width in mm	1650	1650	1650	1650	1650	650
Max. work width in Inch	65"	65"	65"	65"	65"	26"
Max. work speed	4 m/Min.*	8 m/Min.	8 m/Min.	12 m/Min.	8 m/Min.	2 m/Min.
Training time and effort	2	2	2	3	4	1
Operating volume	medium	medium	medium	high	high	medium
Cold lamination	●	●	●	●	●	●
Hot lamination				●	●	
Sealing					●	
Rigid indoor displays	●	●	●●	●●	●●	
Flexible indoor displays	●	●	●●	●●	●●	
Floor graphics	●	●	●●	●●	●●	
Backlit displays	●	●	●●	●●	●●	
Pop-up displays	●	●	●●	●●	●●	
Roll-up displays	●	●	●●	●●	●●	
Photographs and prints	●	●	●●	●●	●●	●

Training effort
 1: No training
 2: Minimal
 3: Moderate
 4: Intensive

Legend
 ● Scope of application
 ● Typical applications for cold laminations
 ● Typical applications for hot laminations
 * Max. 8 m/Min. when upgraded with optional high-speed motor

NESCHEN ECOLAM 1650



UPGRADES

HIGH-SPEED MOTOR
8m/Min.

WINDUP ASSY
+1

Optional upgrades for the EcoLam 1650 can be factory-installed or retrofitted for adapting to growing demands.

The Neschen EcoLam 1650 is a pressure sensitive machine to provide excellent results with a wide range of materials. It offers real flexibility and high performance for end users with low throughput. Due to the excellent price-performance ratio, the EcoLam 1650 laminator is particularly suitable for advertising technicians and small to medium display-based businesses who want to provide a wider range of applications and have no need for a machine with shrink-wrapping options.

- Pneumatic pressure and manual speed adjustment
- Externally located brakes for film tension adjustment
- Built-in compressor for pneumatic roller lifting
- Foldable feed table for easy setup
- Ergonomic control panel on the top of the machine
- Auto-grip shafts for user-friendly material loading
- Optional cutting system
- Available upgrades:
 Additional upwind assy (order no.: 6046256)
 High-speed motor 8 m/Min. (order no.: 6046257)

TECHNICAL DATA	Order no.: 6046157
Max. processing width	1650 mm
Max. processing speed	4 m/Min.*
Max. contact pressure	1.6 N/mm
Max. substrate thickness	40 mm
Roller heating	top roller 40 °C or 50 °C
Dimensions, width x height x depth	2175 mm x 1280 mm x 700 mm
Table height	860 mm on wheels, adjustable up to 940 mm
Net weight	270 kg
Power supply	1N/PE 230 V AC/50-60 Hz; 1700 W, 8 A

* Max. 8 m/Min. when upgraded with optional high-speed motor

NEW

NESCHEN COLDLAM 1650

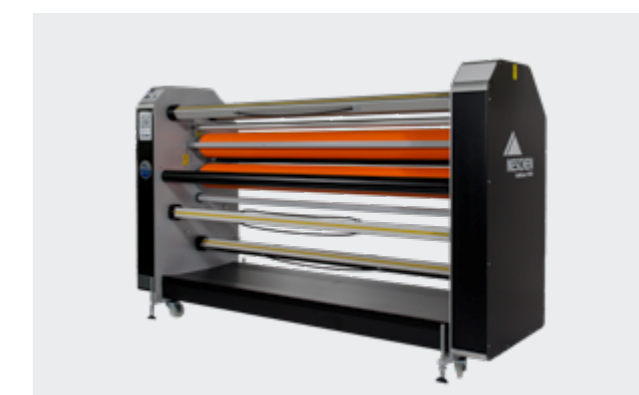
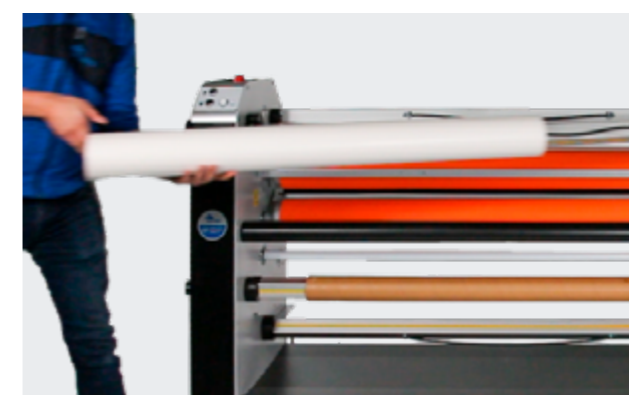
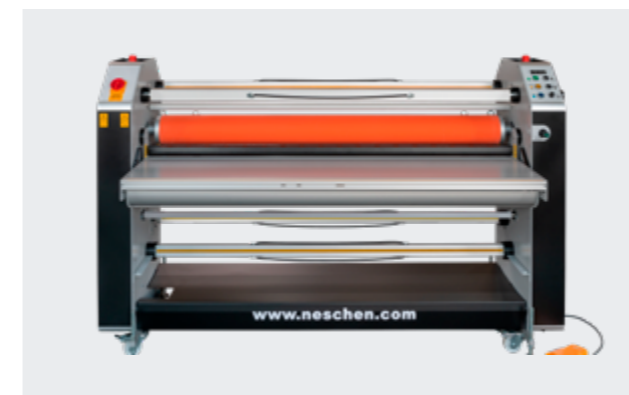


The Neschen ColdLam 1650 is our "all-rounder". Designed for basic applications, this device is particularly suitable for processing pressure-sensitive products and offers a flexible and robust overall solution at an affordable price, with maximum functionality. Feeding table and unwinding tray facilitate handling with XL media.

- Ergonomic control panel for easy operation
- Foldable feed table for easy setup
- Pull-out unwinding trough for easy feeding of individual prints of up to 10 m
- Auto-grip shafts for user-friendly material loading
- Additional control panel at the rear of the machine
- Integrated compressor and roll-to-roll functionality
- Optional: longitudinal cutting unit, 150 mm core adapter, infeed-table add-on pack

TECHNICAL DATA	Order no.: 6037409
Max. processing width	1650 mm
Max. processing speed	8 m/Min.
Max. contact pressure	1.6 N/mm
Max. substrate thickness	40 mm
Roller heating	70 °C (top roller)
Dimensions, width x height x depth	2175 mm x 1320 mm x 550 mm
Table height	870 mm on wheels, adjustable up to 950 mm
Net weight	400 kg
Power supply	1N/PE 230 V AC/50-60 Hz; 1.700 W, 8 A

NESCHEN COLDLAM 1650 SW



The Neschen ColdLam 1650 SW is a pressure sensitive machine with heat assist on the top roller (70 degrees). It offers real flexibility and high-performance levels for small and medium-sized businesses. The two rear swing-out shafts allow easy material loading. Due to the excellent price-performance ratio, the ColdLam 1650 SW laminator is particularly suitable for advertising technicians.

- Ergonomic control panel for easy operation
- Foldable feed table for easy setup
- In-feed trough for easy feeding of individual prints of up to 10 m
- **Swing-out shafts** for easy loading
- Additional control panel at the rear of the machine
- Integrated compressor and roll-to-roll functionality
- Optional: longitudinal cutting unit, 150 mm core adapter, infeed-table add-on pack

TECHNICAL DATA	Order no.: 6046466
Max. processing width	1650 mm
Max. processing speed	8 m/Min.
Max. contact pressure	1.6 N/mm
Max. substrate thickness	40 mm
Roller heating	70 °C (top roller)
Dimensions, width x height x depth	2175 mm x 1320 mm x 650 mm
Table height	870 mm on wheels, adjustable up to 950 mm
Net weight	490 kg
Power supply	1N/PE 230 V AC/50-60 Hz; 1.700 W, 8 A

NESCHEN HOTLAM 1650 TH



The Neschen HotLam 1650 TH with its variable pressure and speed adjustment is aimed at both new and experienced users. A sophisticated roller concept with high contact roller pressure. At 12 meters per minute the HotLam 1650 produces excellent results – fast. Auto-grip shafts allow for easy material handling. The longitudinal cutting unit brings your product to the exact end format.

- Manual air pressure and speed adjustment for maximum flexibility
- Swing-out auto-grip shafts for user-friendly loading
- Externally located brakes for better adjustment of film tension
- Integrated compressor and role to role functionality
- Foldable feed table for easy setup
- Additional control panel at the rear of the machine
- Optional: 150 mm core adapter, infeed-table add-on pack

TECHNICAL DATA	Order no.: 6037411
Max. processing width	1650 mm
Max. processing speed	12 m/Min.
Max. contact pressure	3.1 N/mm
Max. substrate thickness	40 mm
Roller heating	160 °C (top roller)
Dimensions, width × height × depth	2175 mm × 1320 mm × 650 mm
Table height	870 mm on wheels, adjustable up to 950 mm
Net weight	490 kg
Power supply	1N/PE 230 V AC/50-60 Hz; 3.400 W, 16 A

NESCHEN HOTLAM 1650 DOUBLEH



The Neschen HotLam 1650 DoubleH is the perfect device for experienced professional users. It impresses with the ability to combine encapsulation of heat activated materials and a high working speed. Increasing the finishing department's productivity. Material protrusions can be easily removed with the integrated longitudinal cutting solution to prevent open adhesive tapes. Four of the seven auto-grip shafts are swing-outs.

- 2 pairs of main rollers for hot/cold applications
- Four swing-out auto-grip shafts for user-friendly loading
- Pull-out unwinding trough for easy feeding of individual prints of up to 10 m
- Externally located brakes for better adjustment of film tension
- Requires an external compressor for operation
- Two foot switches

TECHNICAL DATA	Order no.: 6039986
Max. processing width	1650 mm
Max. processing speed	8 m/Min.
Max. contact pressure	3.1 N/mm
Max. substrate thickness	40 mm
Roller heating	160 °C (both rollers)
Dimensions, width × height × depth	2175 mm × 1390 mm × 850 mm
Table height	870 mm on wheels, adjustable up to 950 mm
Net weight	820 kg
Power supply	3P+N/PE 230 V AC/50-60 Hz; 9.000 W, 16 A

NESCHEN PHOTOLAM 650



This laminating device, specially developed for photographers, sets new standards in the field of high-quality photo lamination. The innovative Neschen PhotoLam 650 makes it possible to apply a protective film and a double-sided adhesive mounting film up to a maximum width of 650 mm to photos and prints in just one operation.

- Ideal for classical photography
- For all types of poster and art prints
- Externally located brakes for film tensioning
- Ergonomic and user-friendly controls
- Robust, free-standing model
- Suitable for use on mezzanines, due to an easily built frame

TECHNICAL DATA	Order no.: 6041404
Max. processing width	650 mm
Max. processing speed	2 m/Min.
Max. contact pressure	50 kg
Max. substrate thickness	20 mm
Roller heating	70 °C (top roller)
Dimensions, width x height x depth	1240 mm x 1070 mm x 950 mm
Table height	920 mm on support
Net weight	60 kg
Power supply	1N/PE 230 V AC/50-60 Hz, 1.600 W, 7 A

NESCHEN ROLLCUTTER 1650



The Neschen Rollcutter optimizes stock management. From a large format, you create what you need for your project without any delivery time. You become more flexible and faster - a decisive advantage over your competitors! What's more, leftover stock can be put to good use for smaller-format runs. This reduces handling and storage costs and increases efficiency.

- Digital measuring tape for length and width
- Auto-grip axis can be swiveled
- High level of stability and mobility
- Drive can be continuously adjusted in two directions
- Cutting to length and wrapping up to 200 mm thickness
- Cutting to length and wrapping up to 300 mm thickness

TECHNICAL DATA	Order no.: 6041154
Max. processing width	1650 mm
Max. cutting diameter	200 mm
Max. diameter unwinding axis	300 mm
Max. processing speed	60 m/Min.
Dimensions, width x height x depth	2220 mm x 1220 mm x 700 mm
Net weight	115 kg
Transport dimensions, width x height x depth	2300 mm x 1550 mm x 1000 mm
Power supply	1N/PE 230 VAC/50 Hz-60 Hz; 600 W; 3 A

ACCESSORIES

With the right accessories for your Neschen laminator, your daily work will be even more efficient and easier. At Neschen, we understand what is important in daily business and have therefore put together a range of useful accessories for you. Neschen accessories are 100% compatible with our laminators and offer the same high quality you have come to expect from us.

**Are you still missing something to make your daily work even more efficient that is not listed here?
– Just let us know! We will be happy to find a customized solution for you!**

CUTTING UNIT

The optionally available Neschen cutting unit consists of a knife table with two fixed, replaceable blades. Suitable for Neschen ColdLam and HotLam TH laminators.



Order no.: **6040476**
PU: **1 cutting unit with 2 cutting heads incl. blades**

INDUSTRIAL CORE ADAPTER

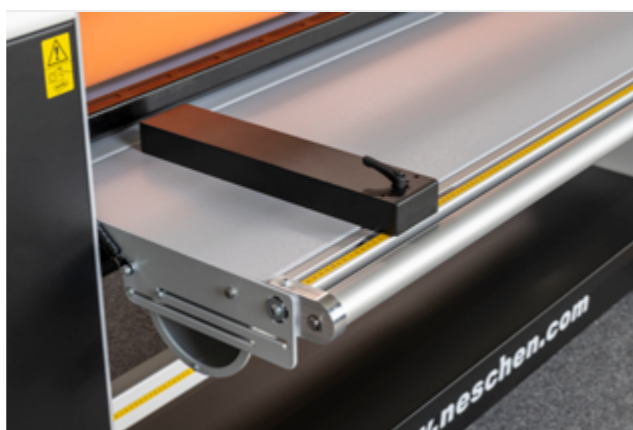
Adapter for holding 150 mm thick industrial cores. The set consists of two adapters, suitable for all 1650 mm Neschen laminators.



Order no.: **6040877**
PU: **1 set for 1 roller/axle**

INFEEED TABLE ADD-ON PACK

This Add-on pack consists of a set of two alignment guides and a rod, that ensure the printed material and panels are fed to the laminator in a clean, aligned position. The alignment guides are fixed in place with a lever. The scale attached to the table helps with millimeter-precise alignment.



Order no.: **6045674**
PU: **1 Set**

ROLLER TABLES

The set of 2 metal roller tables, each with 15 smooth-running castors, can be flexibly adapted to any machine and task. They each have 2 braked and 2 unbraked swivel castors. The Rack height can be easily adapted to your laminators height. The slight incline supports the user when feeding the machine



Order no.: **6044476**
PU: **1 Set (2 pcs.) (delivered unmounted)**
Measures: **each approx. 157 x 56 cm**
Rack height: **85 cm – 95 cm**

WORK TABLE

Large table on swivel castors for high mobility. The 18 mm thick worktop will be delivered in two parts. The lower shelf has an area of approx. 170 x 140 cm and an adjustable height of 85 - 95 cm.



Order no.: **6044477**
PU: **1 table (delivered unmounted)**
Worktop: **approx. 200 x 150 x 1.8 cm**
Rack height: **85 cm – 95 cm**
Plate thickness: **18 mm**

NESCHEN COATING GMBH

Hans-Neschen-Str. 1
31675 Bückebug, Germany

T +49 (0)5722 2070

E info@neschen.com

www.neschen.com



For more information visit
www.neschen.com or scan the QR-Code.

